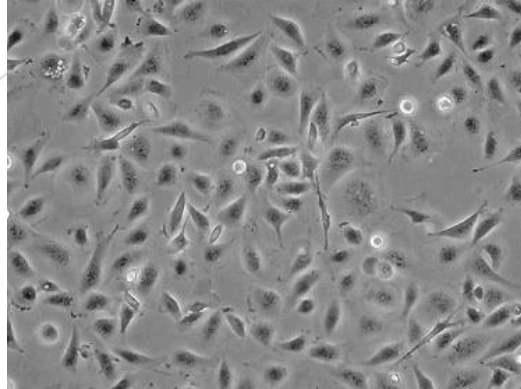


Human Airway Epithelial Cells (hAEC)



General Information

Epithelix is offering primary Human Airway Epithelial Cells (hAEC), passage 1, isolated from nasal (hAECN) or bronchial (hAECB) biopsies. Each vial contains three principal primary cell types: basal, goblet, and ciliated cells. These cells are able to form tight junction.

hAEC are commonly used for *in vitro* studies related with pulmonary diseases and chemical testing. They are now a standard for research on asthma, cancer, cystic fibrosis, bacterial and viral infection. These cells are also a useful tool for the screening, testing and validation of drugs candidates.

Performance

Using an in-house technology and know-how, our hAECs have the following features:

- A faster growth rate
- Very good proliferation and differentiation capacities (a minimum of 10 population doublings)
- An improved and uniform morphology
- Very good reproducibility

Description and Maintenance

hAECs are supplied in a cryogenic vial containing $> 1 \times 10^6$ viable cells in a volume of 1 mL of freezing medium. The vials with cryo-conserved cells will be shipped on dry-ice. Upon arrival, the cells must be taken out and transferred to a storage facility with liquid nitrogen (-196 °C).

General Media Requirements

Culture of hAEC is best performed using Epithelix hAEC Growth Medium. This medium is serum free and ready to use (EP09AM). It is available in 500 mL format.

Quality Control

All batches are performance-assayed and tested negative for HIV-1, mycoplasma, hepatitis-B, hepatitis-C, bacteria, yeast and fungi.

Epithelix Sàrl

14, Chemin des Aulx – CH-1228 Plan les Ouates – Genève - Switzerland

Tel: +41 (0) 22 794 65 15 / Fax: +41 (0) 22 794 65 17

epithelix@epithelix.com – www.epithelix.com